



High Gap  
Printing

Scan & Print  
Capabilities

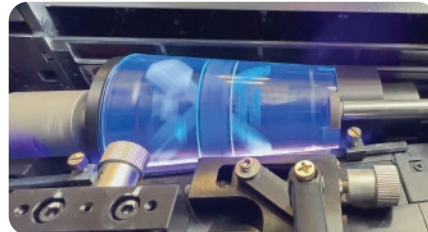
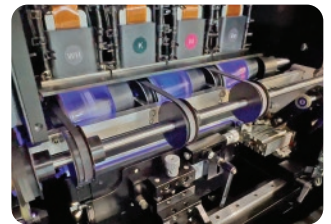
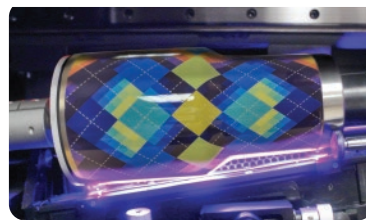
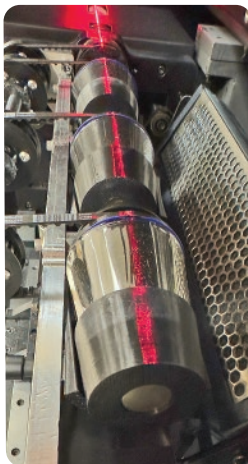
Variable  
Data Ready

**UV Rotary Printer  
for decorating bottles,  
glass, tumblers and  
much more!**

- The Rev360<sup>T</sup> v2.3 offers fast, durable and vibrant prints
- 8w segmented lamp for faster curing and better print quality
- Inline gloss varnish printing
- Print on tapered/conical objects
- Ask about our High-Gap software - a solution to expand printable area on challenging shapes to achieve precise printing with gaps of up to 10mm-15mm option!
- Robotic automation feature available




Contact Us





## Rev360Tv2.3 TECHNICAL SPECIFICATIONS

<b>Print System</b>	Ricoh Gen 4 print heads, automatic voltage & temperature control.	
<b>Maximum Resolution</b>	1200 x 900 DPI	
<b>Ink</b>	UV curable Primer+ W + CMYK + Varnish (Clearcoat). All inks are Prop65 compliant.	
<b>Ink Capacity &amp; System</b>	1.5L per color. Automatic ink supply system, active negative pressure system.	
<b>Maximum Print Size</b>	240 mm length (9.44")	
<b>Standard Substrate Size</b>	Diameter: 40 mm -120 mm (1.57" - 4.7") Length: 110 mm -270 mm (4.3" - 10.63")	
<b>Interface/RIP Software</b>	Gigabit Ethernet, RIP-Color Print, PCS 6	
<b>Environment</b>	Temperature: 16° -28°C (61° - 82°F) Humidity: 40 - 70% (Recommended) Altitude: Up to 1,609 m (5,280 ft)	<p><b>Watch the Printer in Action</b></p> 
<b>Floor Dimensions</b>	1373 mm x 670 mm x 1654 mm (54.1" X 26.4" X 65.1") Weight: Approximately 400 kg (881 lbs.)	
<b>Electrical</b>	Single phase 220V (50/60Hz. AC); 7 Amps Maximum: 1KW	
<b>Air</b>	85-100 PSI shop air	

**PRINTS TAPERED/CONICAL OBJECTS - W+CMYK+V**  
**8W LAMP SEGMENTED LAMP ALLOWS INLINE GLOSS VARNISH PRINTING**  
**MIST COLLECTION SYSTEM REDUCES CLEANING & MAINTENANCE**



**Create. Innovate. Elevate.**