



High Gap
Printing

6.3" Max.
Object
Diameter

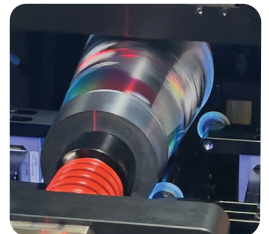
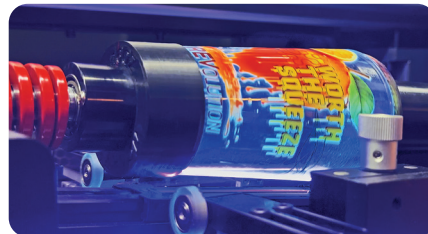
Jettable
Primer
Compatible

Engineered for exceptional performance, this high-speed UV cylinder printing machine delivers high-resolution prints on both straight-walled and tapered cylinder objects. The RevPro is the perfect solution for high-quality decoration in drinkware, barware, candles, and industrial product applications.


- Maximum object diameter at 6.3"
- High-gap printing technology ensures precise print on complex / curved surfaces
- Compatible with Jettable Primer



Contact Us



REVPRO TECHNICAL SPECIFICATIONS

Print System	Ricoh Gen 6 print heads. Automatic voltage and temperature control 8W UV lamp	Watch the Printer in Action 
Maximum Resolution	1200 x 900 DPI	
Ink	UV curable inks · P+WW+CMYK+V / All inks are Prop65 compliant	
Ink Capacity & System	1L main ink tank for each color. Automatic ink supply system. Active negative pressure system.	
Maximum Print Size	300 mm length (11.8")	
Standard Substrate Size	Diameter: 40 mm -160 mm (1.57" - 6.3") Length: 330 mm (13")	
Interface/RIP Software	NuviPRINT Bottle RIP software, 10" Color LCD Touch Screen, Printer Control Software (PCS)	
Environment	Temperature: 16° -28°C (61° -82°F) Humidity: 40 -70% (Recommended) Altitude: Up to 1,000 m (3,281 ft)	
Floor Dimensions	1730 x 700 x 1958 mm (68.1" x 27.6" x 77.1")	
Electrical	230 V ±10% VAC single phase 50/ 60 Hz	
Compressed Air	85-100 PSI	

EMBOSSSED PRINTING, DOUBLE-SIDED DECORATION • ACHIEVE MULTIPLE REGISTRATION OF COLORS AND VARNISHES TO OBTAIN PRINTS WITH SHARP AND CLEAR EDGES • VARIABLE DATA PRINTING • SUPPORT BAR CODES, QR CODES, TEXT, NUMBERS, GRAPHICS, DATES, TIMES, SERIAL NUMBERS, AND PHOTO IMAGES, ETC • ACTIVE NEGATIVE PRESSURE SYSTEM TO MAINTAIN CONSISTENT INK FLOW TO THE PRINTHEADS • PREVENT INK BACKFLOW AND ENSURE STABLE PRESSURE LEVELS • TEMPLATE PRINTING ALLOWS FOR RAPID, HIGH-VOLUME OUTPUT WITH SIGNIFICANTLY REDUCED LEAD TIMES



Create. Innovate. Elevate.